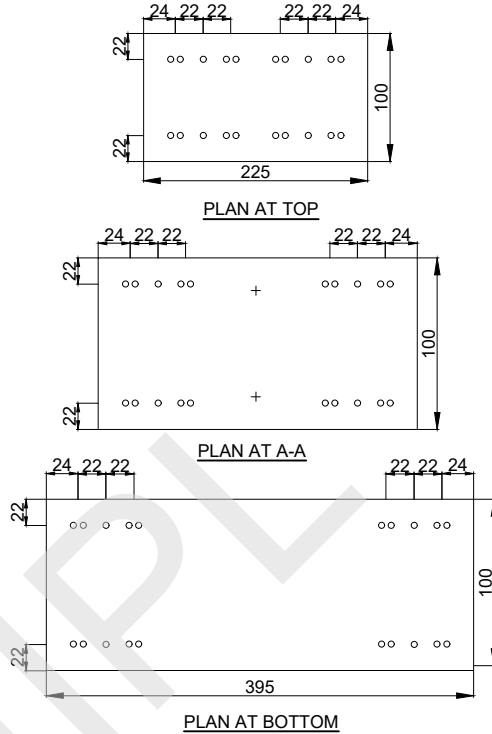
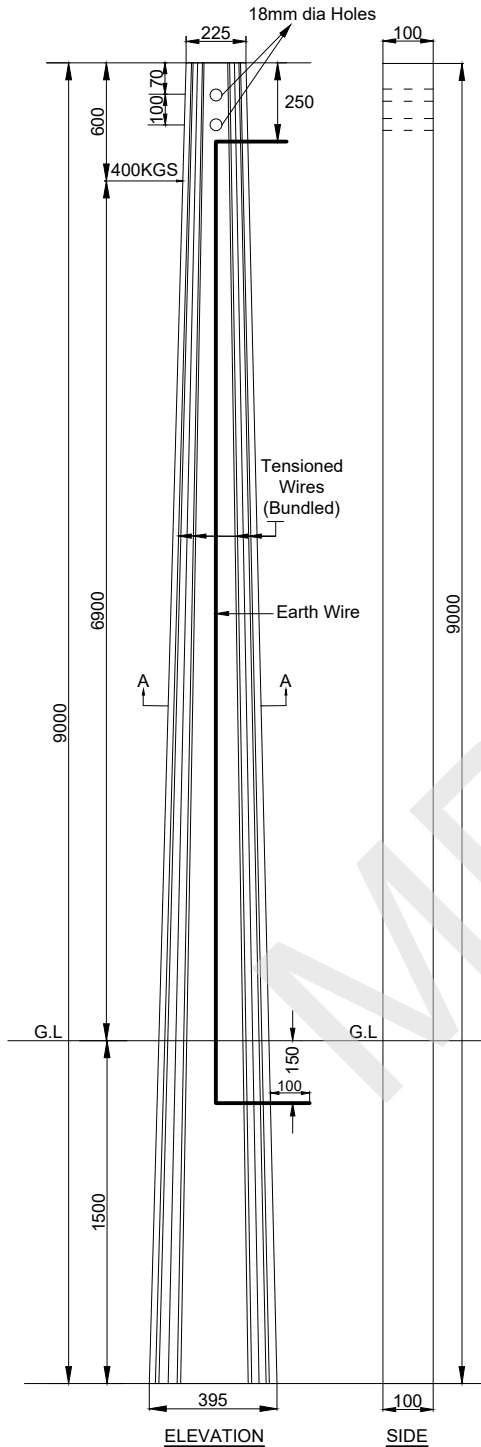


## REINFORCEMENT DETAILS OF 9.0/400KG PRESTRESSED CEMENT CONCRETE POLES (FACTOR OF SAFETY = 2.0)



Location of holes as per REC Standards  
 O Denotes Tensioned Wire  
 + Possible Position of Earth Wire

### TECHNICAL GUARANTEE PARTICULARS 9.0mtr/400kg WORKING LOAD

TYPE OF POLE	:FLAT
SECTION: A) TOP	: 225 X 100 mm
B) BOTTOM	: 395 X 100 mm
QUANTITY OF CONCRETE	: 0.279 m <sup>3</sup>
CONCRETE GRADE	: M-40
MAXIMUM SIZE OF AGGREGATE SHALL NOT EXCEED	: 12mm
OVERALL LENGTH SUPPORT	: 9.0 m
PLANTING DEPTH	: 1.5 m
DIAMETER OF PRE-STRESSING WIRE	: 4 mm
DIAMETER OF G.I. WIRE	: 4 mm
NUMBER TENSIONED WIRES	: 20 no's
MINIMUM CUBE STRENGTH OF CONCRETE AT 28 DAYS	: 400 kg/cm <sup>2</sup>
CLEAR COVER	: 20 mm
FACTORY OF SAFETY	: 2.0
WORKING LOAD	: 400 kg
ULTIMATE LOAD	: 800 kg
WEIGHT OF POLE (THEORETICAL)	: 684 kg
LOAD APPLICATION AT A POINT FROM THE TOP	: 600 mm
ULTIMATE TENSION STRENGTH FOR 4MM WIRE	: 17500 kg/cm <sup>2</sup>
LIVE VOLTAGE	: 33KV-HT & LT Lines
GI EARTH WIRE 8SWG	: 1 no
<u>All dimensions are in mm.</u>	<u>NOT TO SCALE</u>